



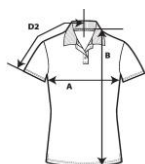
6280L

Women's Double Pique Polo



DETAILS

Weight	210.0 G/SqM
Content	100% Combed Ring Spun Cotton
Yarn Count	30/1
Features	Semi-fitted contoured silhouette with side seam and 2.5 cm side vents Rib knit contoured collar and hemmed sleeves Woven label Care label Three dyed to match buttons (some colours have a contrast colour inside placket and collar) Oeko-Tex® Standard 100 Certified
Sizes	S-2XL
Case Packs	S - 2XL 36 PIECES
Colours	17
SKU's	85



SPECIFICATIONS

Centimeters	Tol-	Tol+	S	M	L	XL	2XL
Chest/Pecho (A)	1.905	1.905	41.910	45.085	50.165	53.975	58.420
Length from HPS/Largo desde HPS (B)	2.540	2.540	64.770	67.310	69.850	72.390	74.930
Sleeve length (centre back)/Largo de Ma	1.905	1.905	38.100	39.370	41.275	43.180	45.720
Inches	Tol-	Tol+	S	M	L	XL	2XL
Chest/Pecho (A)	0.750	0.750	16.500	17.750	19.750	21.250	23.000
Length from HPS/Largo desde HPS (B)	1.000	1.000	25.500	26.500	27.500	28.500	29.500
Sleeve length (centre back)/Largo de Ma	0.750	0.750	15.000	15.500	16.250	17.000	18.000

S-2XL

COLOURS	Code	Comments
Azalea	071	
Black	036	
Black / Charcoal	KB036	
Cobblestone	335	
Forest Green	033	
Heather Grey	346	90% Ring Spun Cotton, 10% Polyester
Key Lime	332	
Lemon Zest	331	
Mandarin Orange	315	
Maroon	327	
Navy	032	
Pool Blue	310	
Red	338	
Red / Navy	KA338	
Royal Blue	051	
White	030	
White / Navy	KA030	

CHANGES

Total Net Change 0 SKU's