

ANVIL®



980



Adult Lightweight Tee

DETAILS

Weight

Content

Yarn Count

Features

146.0 G/SqM
 100% Combed Ring Spun Cotton
 32/1
 High stitch density for smoother printing surface
 Semi-fitted
 Transitioning to side seam in 2019
 Shoulder-to-shoulder tape and seamed collar
 Twin-needle sleeve and bottom hem
 TearAway label
 Oeko-Tex® Standard 100 Certified

Sizes

Case Packs

S-2XL

S - XL 72 PIECES

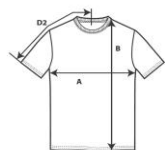
2XL 36 PIECES

Colours

21

SKU's

105



)2)

Length from HPS (B)

Sleeve length (centre back) (D2)

	Tol-	Tol+	S	M	L	XL	2XL
	1.905	1.905	45.720	50.800	55.880	60.960	66.040
	2.540	2.540	69.850	73.025	75.565	78.105	81.280
	1.905	1.905	40.005	43.180	46.355	49.530	52.705
	Tol-	Tol+	S	M	L	XL	2XL
	0.750	0.750	18.000	20.000	22.000	24.000	26.000
	1.000	1.000	28.000	29.250	30.250	31.250	32.500
	0.750	0.750	15.750	17.000	18.250	19.500	20.750

S-2XL

COLOURS

- Black
- Caribbean Blue
- Charcoal
- City Green
- Heather Blue
- Heather Dark Grey
- Heather Graphite
- Heather Green
- Heather Grey
- Heather Navy
- Heather Purple
- Light Blue
- Navy
- Neon Green
- Neon Orange
- Neon Pink
- Neon Yellow
- Red
- Royal Blue
- Smoke
- White

Code

Comments

036	
308	
042	
303	
321	65% Polyester, 35% Ring Spun Cotton
334	65% Polyester, 35% Ring Spun Cotton
780	50% Ring Spun Cotton, 50% Polyester
322	65% Polyester, 35% Ring Spun Cotton
346	90% Ring Spun Cotton, 10% Polyester
170	65% Polyester, 35% Ring Spun Cotton
232	65% Polyester, 35% Ring Spun Cotton
326	
032	
305	65% Polyester, 35% Ring Spun Cotton
345	65% Polyester, 35% Ring Spun Cotton
343	65% Polyester, 35% Ring Spun Cotton
344	65% Polyester, 35% Ring Spun Cotton
338	
051	
342	
030	

CHANGES

Deletions

S, M, L, XL, 2XL

Chocolate, Coral, Dusty Rose, Green Apple, Independence Red, Kelly Green, Neon Blue, Orange, Pool Blue, Purple, Spring Yellow, Teal Ice, Terracotta, Violet

Total Net Change 70 SKU's