



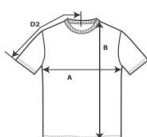
**4017**

**Adult Lightweight Tee**



**DETAILS**

<b>Weight</b>	163.0 G/SqM
<b>Content</b>	100% ring spun cotton
<b>Yarn Count</b>	31/1
<b>Features</b>	Soft-washed garment-dyed fabric Twin-needle collar Twill taped neck and shoulders Twill label Joker label Sideseamed Twin-needle armhole, sleeve and bottom hems
<b>Sizes</b>	S - 3XL
<b>Case Packs</b>	S - 3XL 60 PIECES
<b>Colours</b>	17
<b>SKU's</b>	102



**SPECIFICATIONS**

Centimeters	ToI-	ToI+	S	M	L	XL	2XL	3XL
<b>Chest (A)</b>	1.905	1.905	46.990	52.070	57.150	62.230	67.310	72.390
<b>Length from HPS (B)</b>	2.540	2.540	71.120	74.930	78.105	81.280	83.820	86.360
Inches	ToI-	ToI+	S	M	L	XL	2XL	3XL
<b>Chest (A)</b>	0.750	0.750	18.500	20.500	22.500	24.500	26.500	28.500
<b>Length from HPS (B)</b>	1.000	1.000	28.000	29.500	30.750	32.000	33.000	34.000

**S-3XL**

COLOURS	Code	Comments
Black	01R	
Blue Jean	03P	
Boysenberry	56P	
Brick	05P	
Chalky Mint	09P	
Chambray	08D	
Grey	19P	
Island Reef	10D	
Lagoon Blue	12D	
Midnight	09R	
Neon Red Orange	541	
Orchid	26R	
Pepper	34P	
Sage	18D	
Sandstone	37P	
White	01W	
Yam	44P	

**CHANGES**

Additions  
S, M, L, XL, 2XL, 3XL Boysenberry, Chalky Mint, Chambray, Island Reef, Lagoon Blue, Orchid  
Total Net Change 36 SKU's

PIGMENT DYE REFERS TO WASHED DOWN COLOURS THAT CONTINUE TO SOFTEN AND AGE WITH WASHING. PIGMENTS ARE INSOLUBLE COLOUR PARTICLES ATTACHED TO THE SURFACE OF CLOTH USING A BINDING AGENT. SLIGHT SHADE VARIATIONS ARE INHERENT IN THE PIGMENT DYE PROCESS.

DUE TO THE NATURE OF THE GARMENT DYING PROCESS, PIGMENT DYED GOODS SHOULD ALWAYS BE WASHED SEPARATELY BEFORE WEARING TO AVOID BLEEDING ISSUES.